

Discovery Conference 2009

Virtualisation in an iMIS environment

David Humphreys – AIM Vic & Tas



Why did we do it?

- Redundancy – if something breaks, something else is there as a fail-over. You can even upgrade ESX during the day!
- Flexibility – you want a test environment? Just fire one up!
- Load balancing – ESX servers share the load.
- Vmotion – move VM's on the fly for maintenance.

Why did we do it?

- Testing – use snapshots to install OS or application patches.
- P2V – don't want to build new iMIS servers? Just P2V them. We did!
- DR
 - replicate your environment on the fly
 - clone your servers to templates.
 - restore servers from backups easily (e.g. V2i)

Why did we do it?

- Scalability – running out of space for new servers? Just add some disks!
- Scalability – running out of grunt? Just add more RAM, more CPU's or even another ESX server. Often no need for an outage.
- Cost – we replaced our server environment with VMWare at reduced cost – including DR.

Things to consider

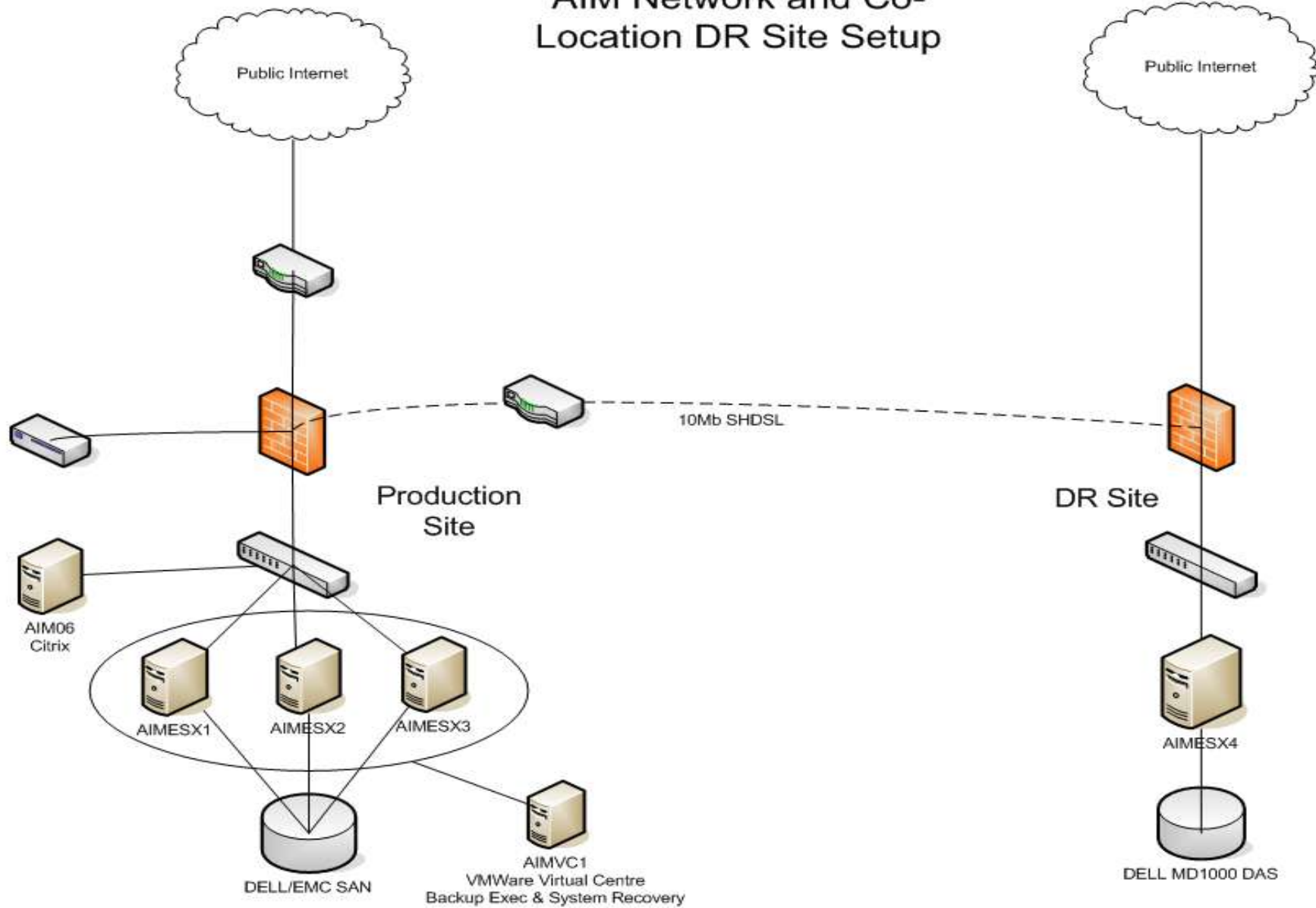
- Retraining – don't be fooled by anyone, VMWare is a new environment and you can make a hash of it very easily.
- Migration – which servers to rebuild and which to P2V, you'll also need some help to migrate everything.
- Compatibility – some vendors don't officially support it (ASi do and run their hosted environment on VM's)

Things to consider

- Support – if possible, ensure one vendor supports the whole shebang (Dell have been great for us here).
- Support – pay for the maintenance – it's very good.
- Cost – the more hardware you virtualise, the cheaper it is.
- Cost – the software is still expensive - expect this to come down in time.

Our environment

AIM Network and Co-Location DR Site Setup



Our environment

aimvc1 - VMware Infrastructure Client

File Edit View Inventory Administration Plugins Help

Inventory Scheduled Tasks Events Administration Maps

Connect CD/DVD 1

Hosts & Clusters

- AIMVIC
 - St Kilda
 - aimesx1.int.aim.com
 - aimesx2.int.aim.com
 - aimesx3.int.aim.com
 - Dev
 - AIM03_Test
 - AIMDYNDEV
 - AIMGEN3
 - AIMMISDEV
 - AIMMDS1
 - AIMNETDEV
 - AIMVREPLICATC
 - aimvm1**
 - AIMWSS1
 - IMIS106NETDEV
 - IMIS106SQLDEV
 - Production
 - AIM01
 - AIMBES
 - AIMCTX
 - AIMDCF
 - AIMDCP
 - AIMDYN
 - AIMEXH
 - AIMIMS
 - AIMNET
 - AIMPRX
 - DR
 - 192.168.20.228
 - AIMCTX_VzReplicate
 - AIMDCP_VzReplicate
 - DRVREPLICATOR

aimvm1

Getting Started Summary Performance Tasks & Events Alarms Console Permissions Maps

What is a Virtual Machine?

A virtual machine is a software computer that, like a physical computer, runs an operating system and applications. An operating system installed on a virtual machine is called a guest operating system.

Because every virtual machine is an isolated computing environment, you can use virtual machines as desktop or workstation environments, as testing environments, or to consolidate server applications.

In VirtualCenter Server, virtual machines run on hosts or clusters. The same host can run many virtual machines.

Basic Tasks

- Power off the virtual machine
- Suspend the virtual machine
- Edit virtual machine settings

Explore Further

- Learn more about virtual machines
- Learn how to install an operating system

Recent Tasks

Name	Target	Status	Initiated by	Time	Start Time
------	--------	--------	--------------	------	------------

Tasks Alarms

AIM\aimuser